

1A Old Haymarket 73-89 Victoria Street, Liverpool, L1 6AF
Tel: 0151 305 2577
Email: liverpoolsales@ascendproperties.com
www.ascendproperties.com

Ascend

Built on higher standards



Alexandra Tower, Princes Parade, Liverpool

Offers In Excess Of £170,000

This is your chance to live in a prime waterfront location, right on Princes Dock in Liverpool. This iconic and imposing development has a range of 1 and 2-bedroom apartments available and is in an ideal location for students and commuters alike.

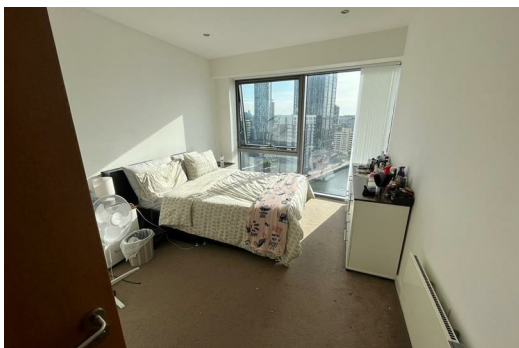
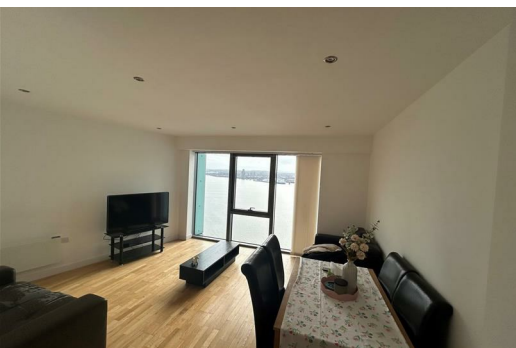
This apartment is absolutely spot-on. Inside you'll find a bright open-plan kitchen/lounge/dining room with huge windows. The kitchen is super-sleek with wooden flooring, white cabinets, chrome handles and an integrated hob/oven. The bedrooms are good sized doubles with plush carpeting underfoot - the perfect haven to relax away from the hustle and bustle of the city - and the modern, tiled bathrooms are equally as luxurious.

A short stroll from your apartment takes you into the heart of Liverpool, where you'll have more bars, restaurants, eateries and shops than you could shake a stick at.

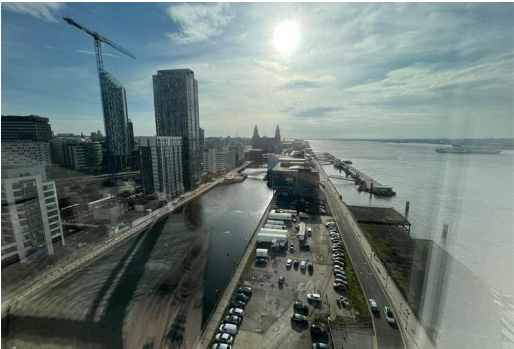
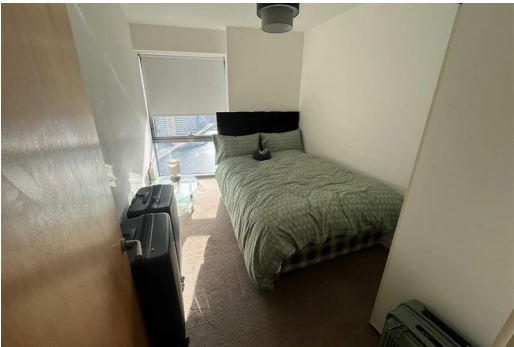
If you'd like to wander further afield, you have a huge range of transport links at your fingertips, along with easy access to the whole of Liverpool and beyond - you really couldn't be more perfectly located. With a bus stop practically on your doorstep and James Street train station just a short stroll away, commuting is a breeze.

Properties like this tend to get snapped up quickly, so make sure you give us a call if you fancy a closer look. And just so you know, the images are for marketing purposes only, so the fixtures and fittings may vary.

Council Tax Band D.



127 Alexandra Tower 19 Princes Parade, Liverpool, Merseyside, L3 1BF



Energy Efficiency Rating		Environmental Impact (CO ₂) Rating	
Very energy efficient - lower running costs	Score	Very environmentally friendly - lower CO ₂ emissions	Score
A	83	A	
B		B	
C		C	
D		D	
E		E	
F		F	
G		G	
Not energy efficient - higher running costs		Not environmentally friendly - higher CO ₂ emissions	